

ENCODE DCC Antibody Validation Document

Date of Submission

Name:

Email:

Lab

Antibody Name:

Target:

Company/
Source:

Catalog Number, database ID, laboratory

Lot Number

Antibody
Description:

Target
Description:

Species Target

Species Host

Validation Method #1

Validation Method #2

Purification
Method

Polyclonal/
Monoclonal

Vendor URL:

Reference (PI/
Publication
Information)

Please complete the following for antibodies to histone modifications:
*if your specifications are not listed in the drop-down box,
please write-in the appropriate information*

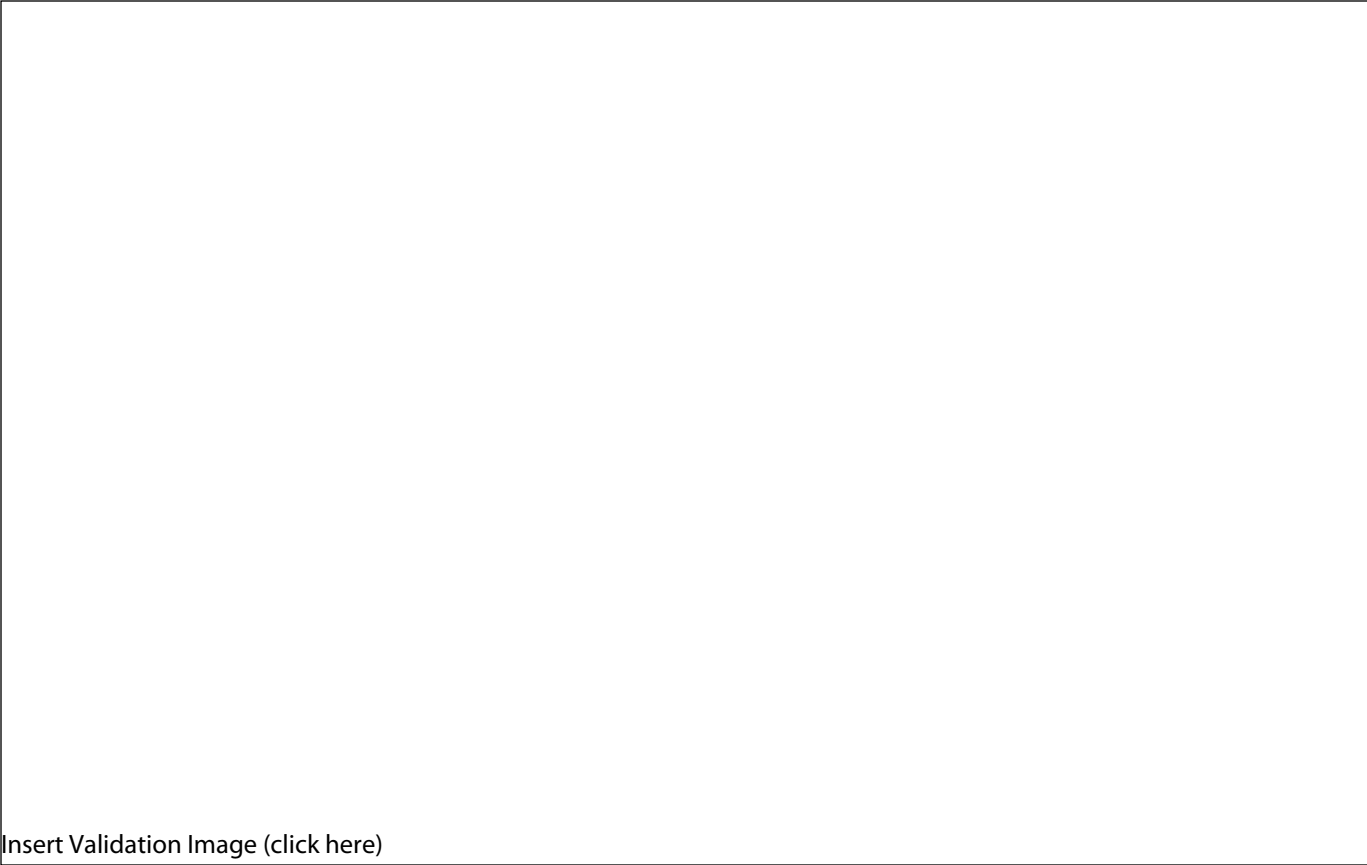
Histone Name

AA modified

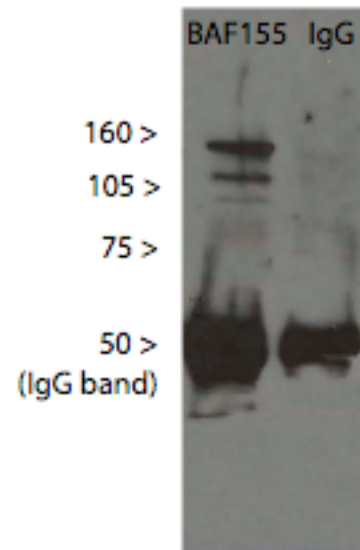
AA Position

Modification

Validation #1
Analysis



Insert Validation Image (click here)



BAF155 = BAF155 IP

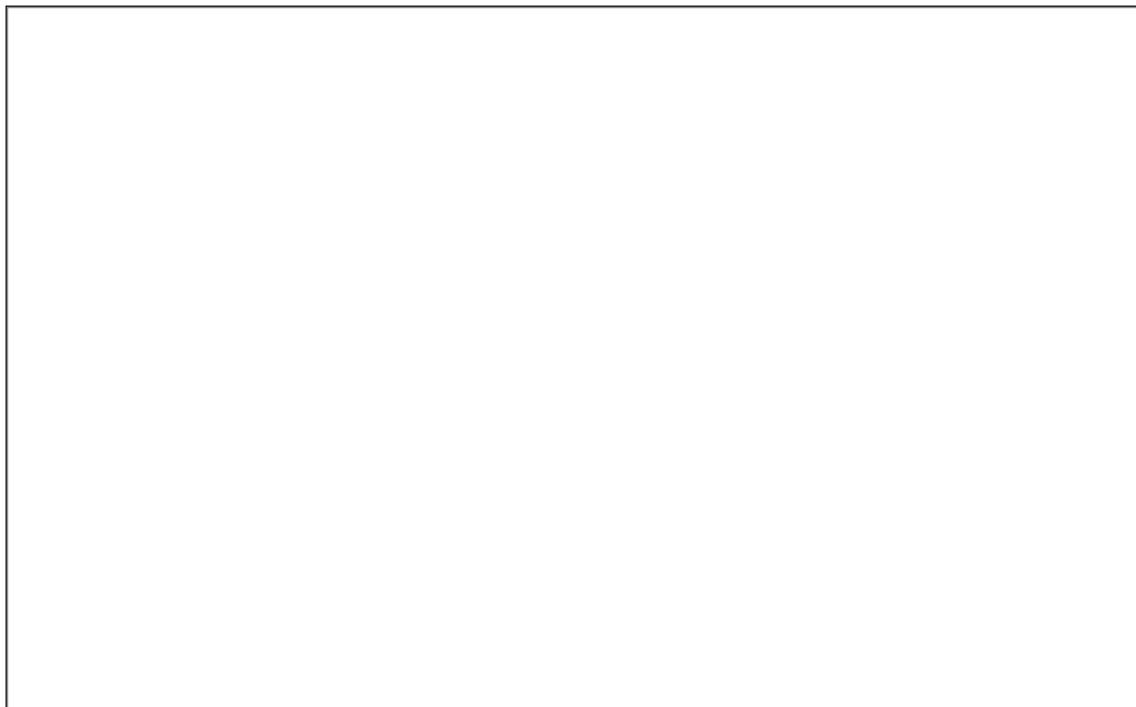
IgG = IP with non-specific rabbit antibody

IP and immunoblot used the same antibody:

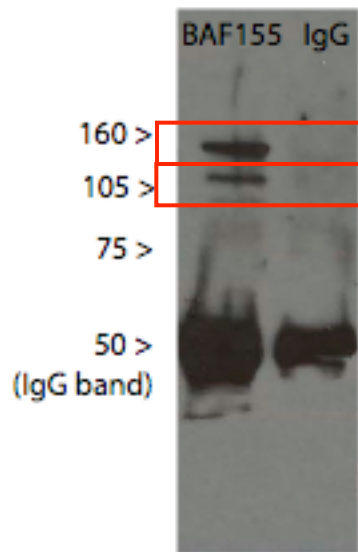
BAF155 (H-76) Santa Cruz sc-10756 (rabbit)

IP was performed with nuclear extract from HeLaS3 cells

Validation #2
Analysis



Insert Validation Image (Click here)



Gel Cut	Protein	Accession #	# unique peptides
Slice_5	SMARCC1 SWI/SNF-related matrix-associated actin-dep	IPI00234252	34
Slice_5	SMARCC2 Isoform 2 of SWI/SNF-related matrix-associa	IPI00150057	9
Slice_5	SYNE1 Spectrin repeat containing, nuclear envelope 1	IPI00747907	3
Slice_5	PCNT Pericentrin	IPI00479143	2
Slice_6	SMARCC1 SWI/SNF-related matrix-associated actin-dep	IPI00234252	14

BAF155 = BAF155 IP

IgG = IP with non-specific rabbit antibody

IP and immunoblot used the same antibody:

BAF155 (H-76) Santa Cruz sc-10756 (rabbit)

IP was performed with nuclear extract from HeLaS3 cells