

ENCODE DCC Antibody Validation Document

Date of Submission

Name:

Email:

Lab

Antibody Name:

Target:

Company/
Source:

Catalog Number, database ID, laboratory

Lot Number

Antibody
Description:

Target
Description:

Species Target

Species Host

Validation Method #1

Validation Method #2

Purification
Method

Polyclonal/
Monoclonal

Vendor URL:

Reference (PI/
Publication
Information)

Please complete the following for antibodies to histone modifications:
*if your specifications are not listed in the drop-down box,
please write-in the appropriate information*

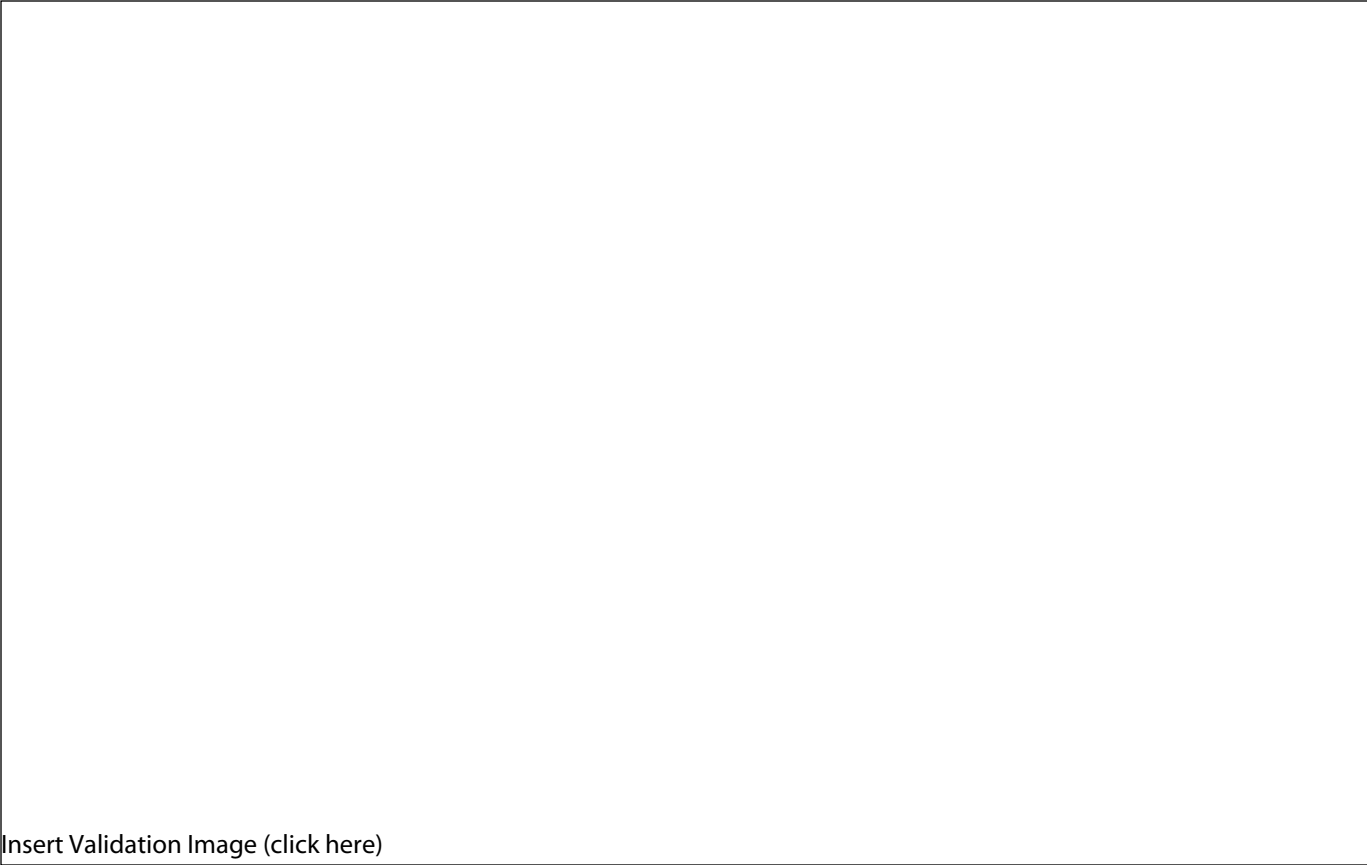
Histone Name

AA modified

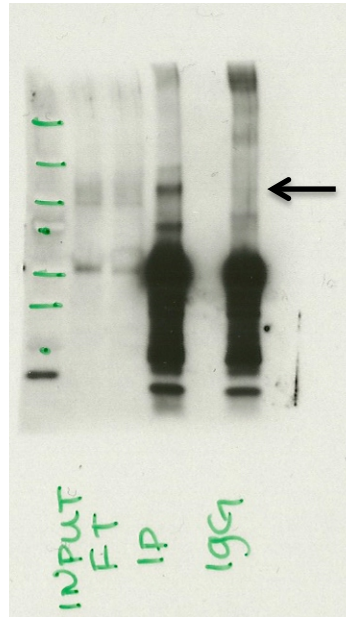
AA Position

Modification

Validation #1
Analysis



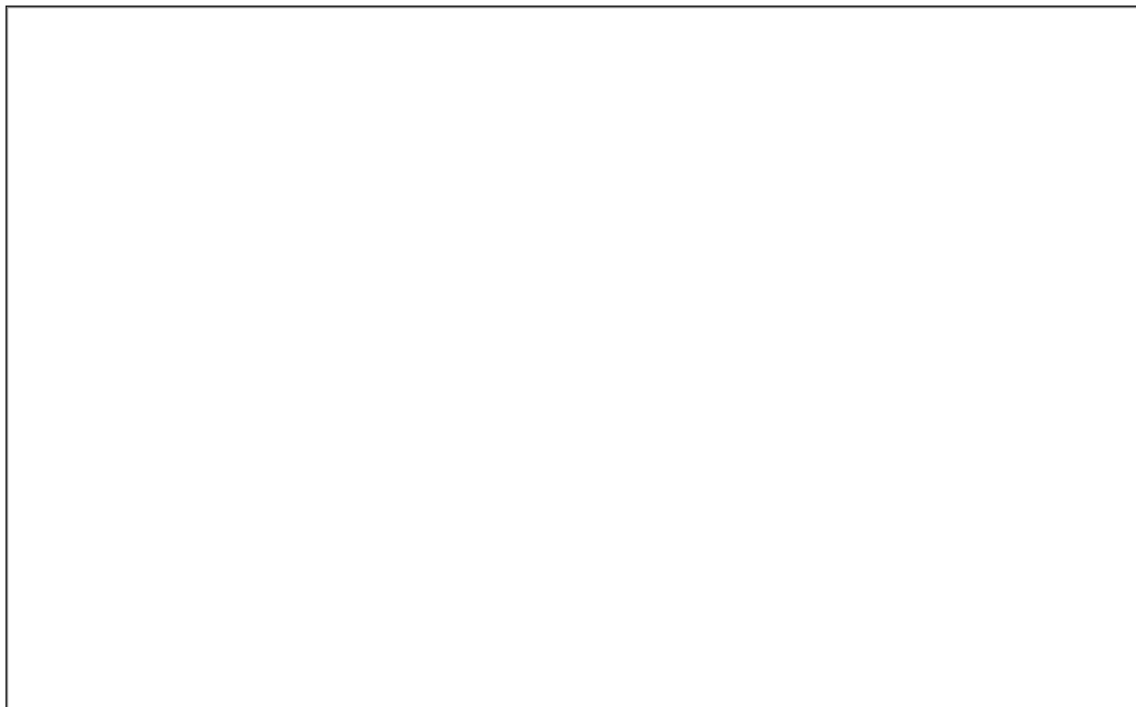
Insert Validation Image (click here)



Western Blot analysis of immunoprecipitated proteins from Human Liver nuclear extracts detected using anti CTCF (07-729) antibody from Millipore. Expected protein band 120kD.

Input: Input lysate, FT: Flowthrough from IP, IP: Immunoprecipitated fraction from 07-729, IgG: Control Immunoprecipitation using IgG.

Validation #2
Analysis



Insert Validation Image (Click here)