

H3K4me3 antibody validation performed by CST
 CST Cat#: 9751 Lot#1,2
<http://www.cellsignal.com/products/9751.html>

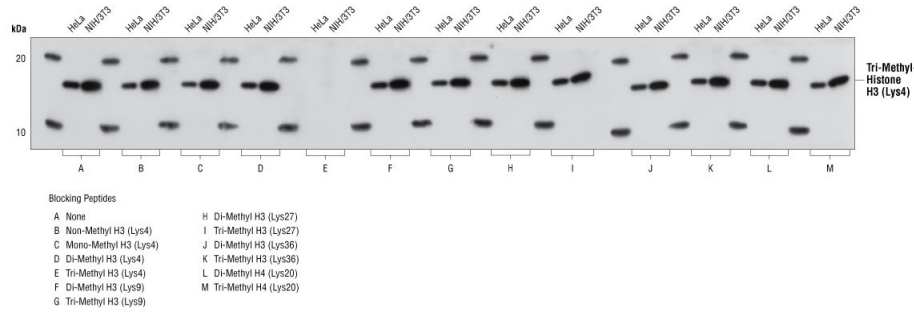


Fig1. Antibody specificity was determined by Western blotting. HeLa and NIH/3T3 cell lysates were probed with Tri-Methyl Histone H3 (Lys4) (C42D8) Rabbit mAb (Panel A) or Tri-Methyl Histone H3 (Lys4) Rabbit mAb pre-adsorbed with 1.5 μ M of various competitor peptides (Panels B-M). As shown, only the tri-methyl histone H3 (Lys4) peptide competed away binding of the antibody.

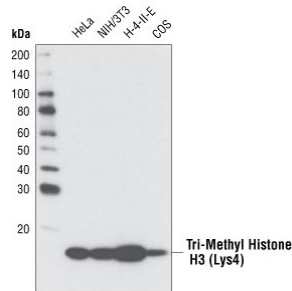


Fig2. Western blot analysis of various cell types using Tri-Methyl Histone H3 (Lys4) (C42D8) Rabbit mAb.