

# ENCODE DCC Antibody Validation Document

Date of Submission

Name:

Email:

Lab

Antibody Name:

Target:

Company/  
Source:

Catalog Number, database ID, laboratory

Lot Number

Antibody  
Description:

Target  
Description:

Species Target

Species Host

Validation Method #1

Validation Method #2

Purification  
Method

Polyclonal/  
Monoclonal

Vendor URL:

Reference (PI/  
Publication  
Information)

Please complete the following for antibodies to histone modifications:  
*if your specifications are not listed in the drop-down box,  
please write-in the appropriate information*

Histone Name

AA modified

AA Position

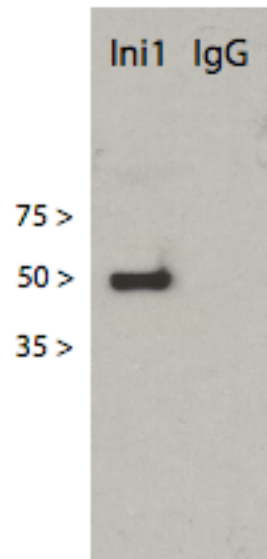
Modification

Validation #1  
Analysis



Insert Validation Image (click here)





Ini1 = Ini1 IP

IgG = IP with non-specific goat IgG

IP: Santa Cruz sc-16189 (goat)

Secondary antibody: Becton Dickinson #612111 (mouse)

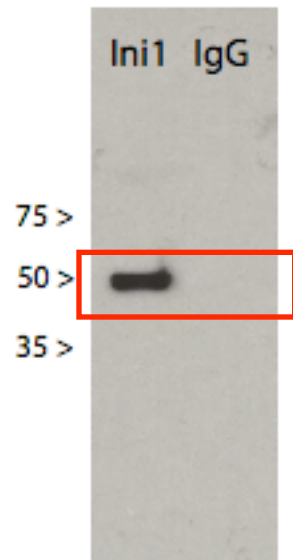
Ini runs at the IgG band, so can't use the same species for both the IP and the immunoblot.

IP was performed with nuclear extract from HeLaS3 cells

Validation #2  
Analysis



Insert Validation Image (Click here)



| Protein  | Accession # | # unique peptides |
|--|-------------|-------------------|
| SMARCE1 Isoform 1 of SWI/SNF-related matrix-assc | IPI00017669 | 9                 |
| SMARCB1 Isoform A of SWI/SNF-related matrix-assc | IPI00029695 | 8                 |
| DPF2 Zinc-finger protein ubi-d4                  | IPI00023322 | 4                 |
| ACTL6A Isoform 1 of Actin-like protein 6A        | IPI00003627 | 3                 |
| - 29 kDa protein                                 | IPI00374686 | 2                 |

Ini1 = Ini1 IP

IgG = IP with non-specific goat IgG

IP: Santa Cruz sc-16189 (goat)

Secondary antibody: Becton Dickinson #612111 (mouse)

Ini1 runs at the IgG band, so can't use the same species

for both the IP and the immunoblot.

IP was performed with nuclear extract from HeLaS3 cells