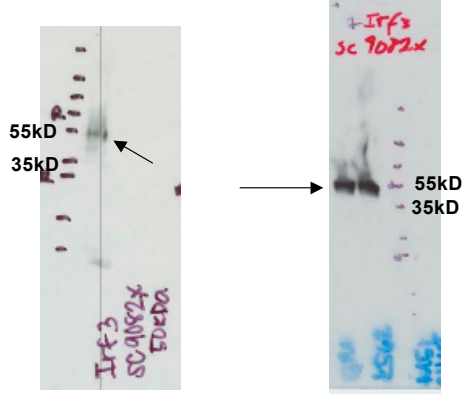


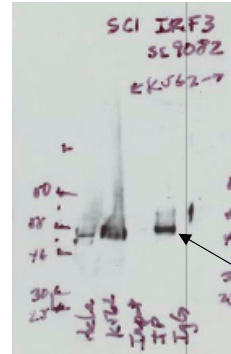
Antibody: IRF3 Source: Santa Cruz Biotechnology ab9082X
Epitope: Rabbit polyclonal; epitope corresponding to amino acids 1-425 of IRF-3 of human origin

Validation 1: Immunoblotting

Arrows indicate band consistent with expected size (47kD) of IRF3 in- Left Panel: whole cell lysates from HepG2 cells and Right Panel: whole cell lysates from (left to right) GM12878 (lane 1) and K562 (lane 2) cells.



Arrow indicates immunoprecipitated band of expected size for IRF3 from K562 nuclear lysates. Lane 1= HeLaS3 nuclear lysate, Lane 2= K562 nuclear lysate, Lane 3= supernatant from K562 immunoprecipitation (IP), Lane 4= bound material from K562 IP, Lane 5= bound material from control IgG IP from K562.



Validation 2: In Progress