

ENCODE DCC Antibody Validation Document

Date of Submission

Name:

Email:

Lab

Antibody Name:

Target:

Company/
Source:

Catalog Number, database ID, laboratory

Lot Number

Antibody
Description:

Target
Description:

Species Target

Species Host

Validation Method #1

Validation Method #2

Purification
Method

Polyclonal/
Monoclonal

Vendor URL:

Reference (PI/
Publication
Information)

Please complete the following for antibodies to histone modifications:
*if your specifications are not listed in the drop-down box,
please write-in the appropriate information*

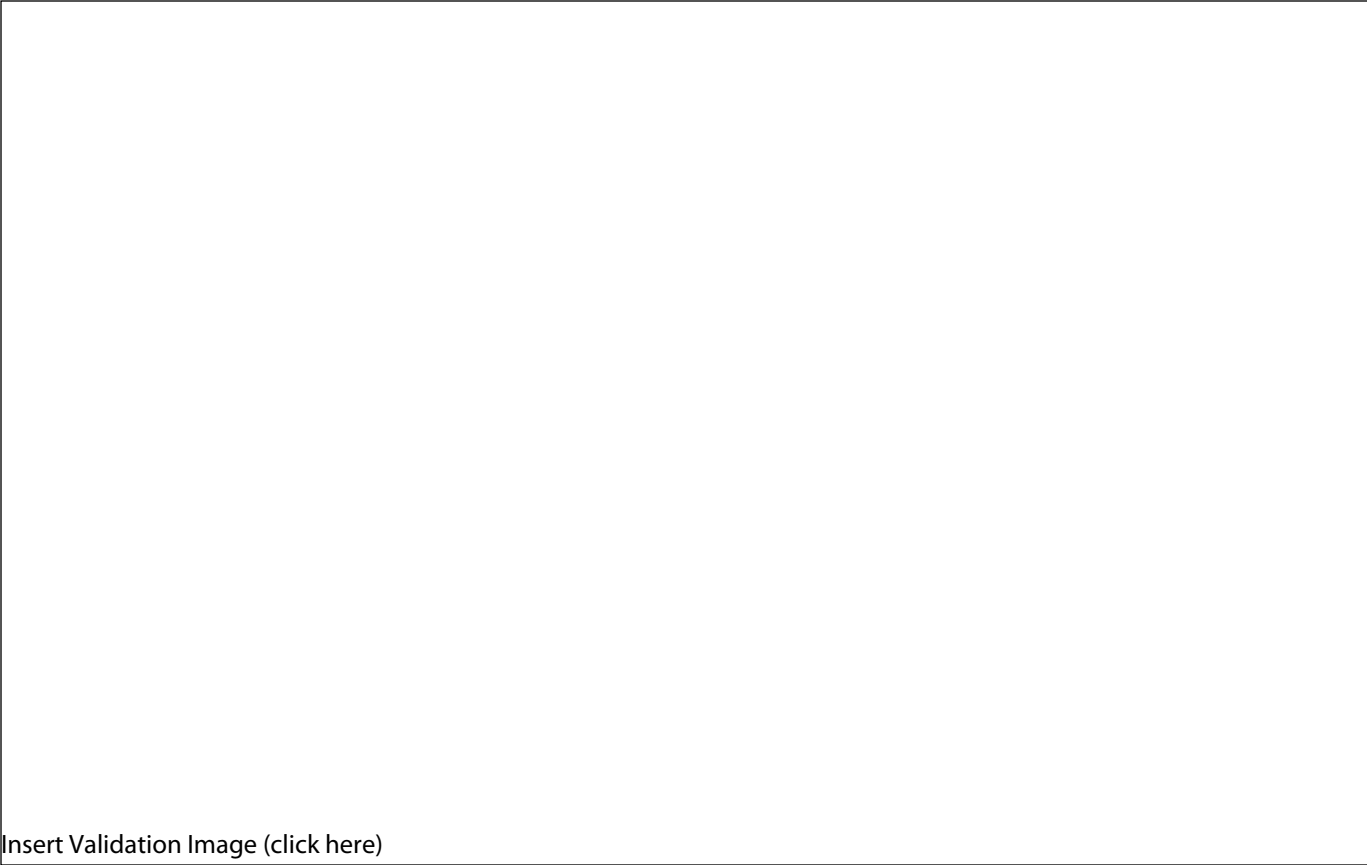
Histone Name

AA modified

AA Position

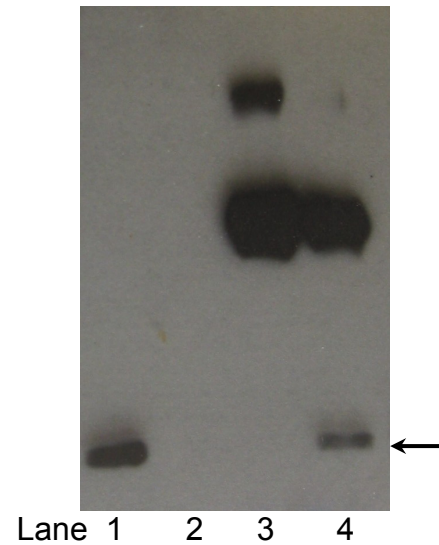
Modification

Validation #1
Analysis



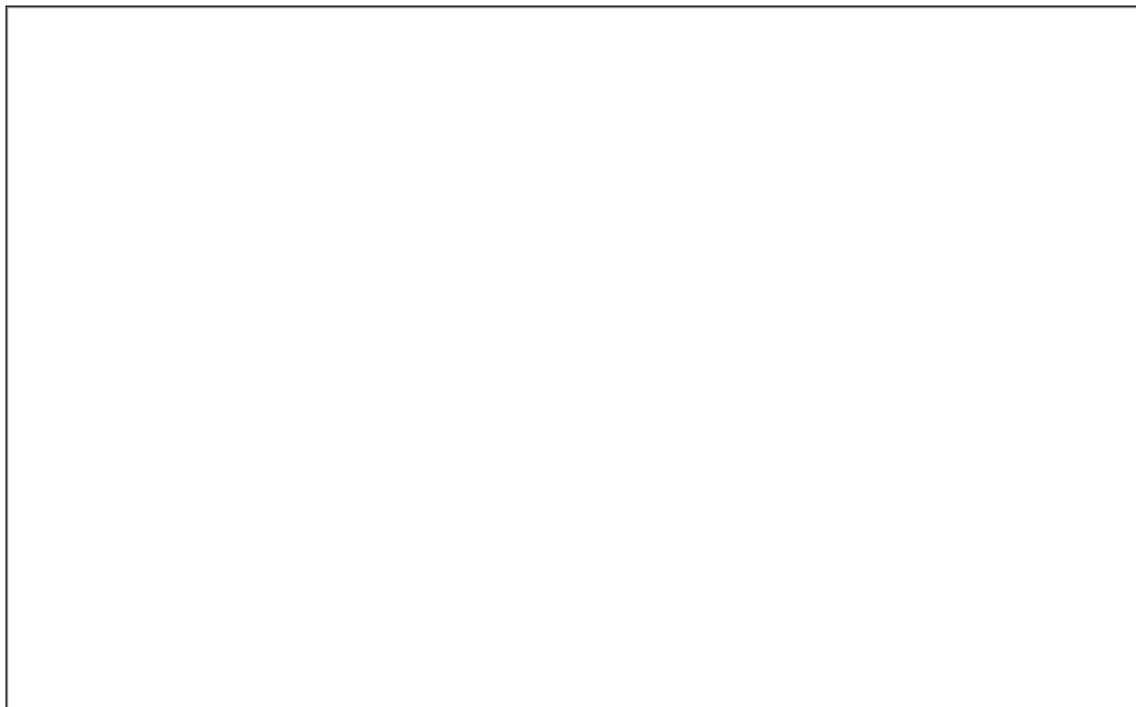
Insert Validation Image (click here)

sc-197 (Max) Immunoprecipitation



Immunoprecipitation of Max from K562 cells using sc-197. Lane 1: input nuclear lysate, Lane 2: unbound material from immunoprecipitation assay with sc-197 Lane 3: material immunoprecipitated with sc-197, Lane 4: material immunoprecipitated using control IgG.

Validation #2
Analysis



Insert Validation Image (Click here)

- **Table 1.** Max motif enrichment.

| Cell Line | Motif Enrichment (log2) | Enrichment p-value (-log10) | Fraction of peaks containing motif |
|-----------|-------------------------|-----------------------------|------------------------------------|
| HUVEC | 3.84407 (Myc_known1) | 1936.52 (Myc_known1) | 0.410095 (Myc_known4) |
| K562 | 4.1347 (Myc_known1) | 1095.32 (Myc_known1) | 0.481899 (Myc_known4) |
| NB4 | 3.47161 (Myc_known1) | 3018.99 (Myc_known1) | 0.30184 (Myc_known4) |

- **Figure 2.** Motif consensus sequences and position weight matrices for highly enriched Max motif.

