

# ENCODE DCC Antibody Validation Document

Date of Submission

Name:

Email:

Lab

Antibody Name:

Target:

Company/  
Source:

Catalog Number, database ID, laboratory

Lot Number

Antibody  
Description:

Target  
Description:

Species Target

Species Host

Validation Method #1

Validation Method #2

Purification  
Method

Polyclonal/  
Monoclonal

Vendor URL:

Reference (PI/  
Publication  
Information)

Please complete the following for antibodies to histone modifications:  
*if your specifications are not listed in the drop-down box,  
please write-in the appropriate information*

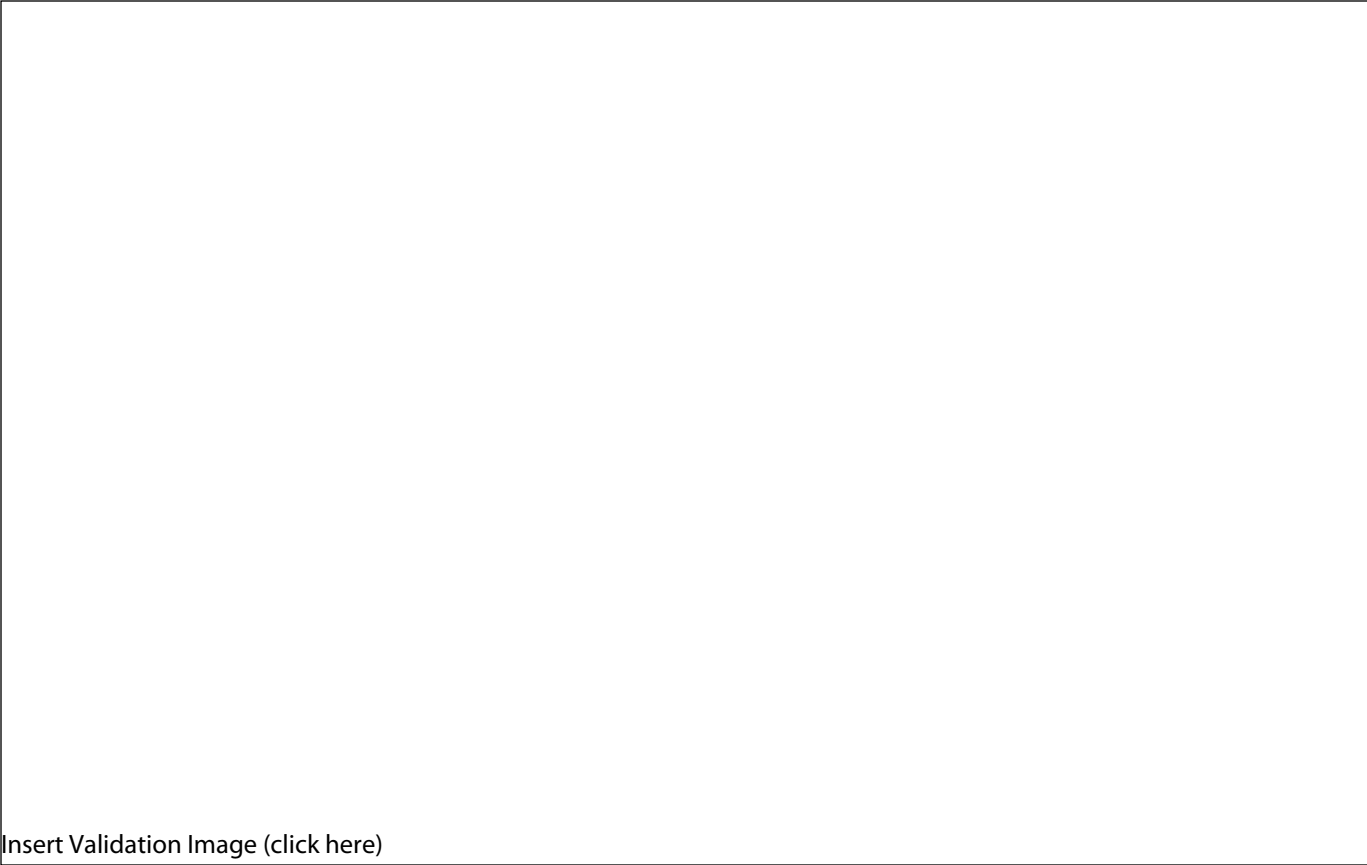
Histone Name

AA modified

AA Position

Modification

Validation #1  
Analysis

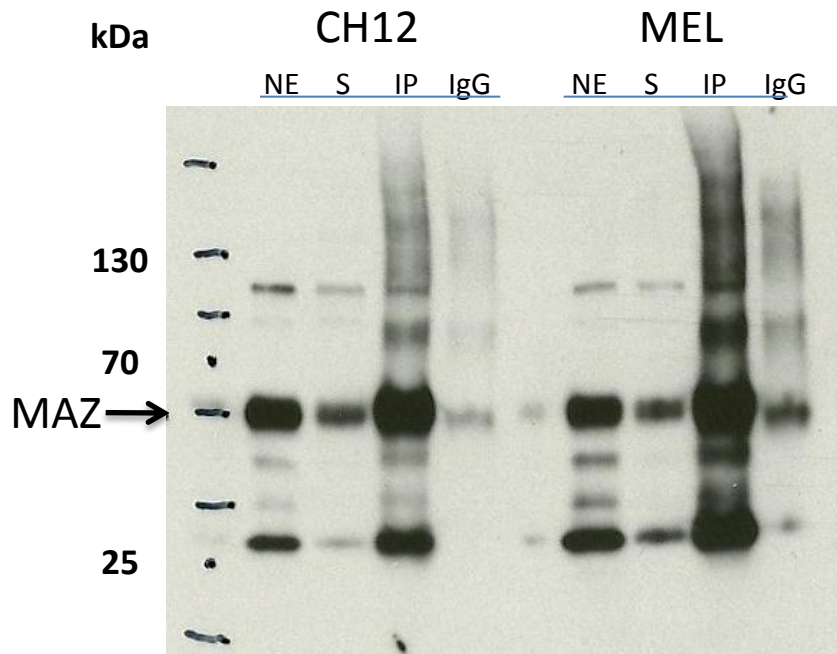


Insert Validation Image (click here)

**Antibody: MAZ Source: Abcam ab85725**

**Epitope:** Rabbit polyclonal to Synthetic peptide, corresponding to a region within amino acids 427-477 of Human MAZ

### Validation 1: Immunoprecipitation (IP) in both CH12 and MEL cell lines



Arrow indicates immunoprecipitated band of expected size of MAZ in both CH12 and MEL cell lines (~60 kDa).

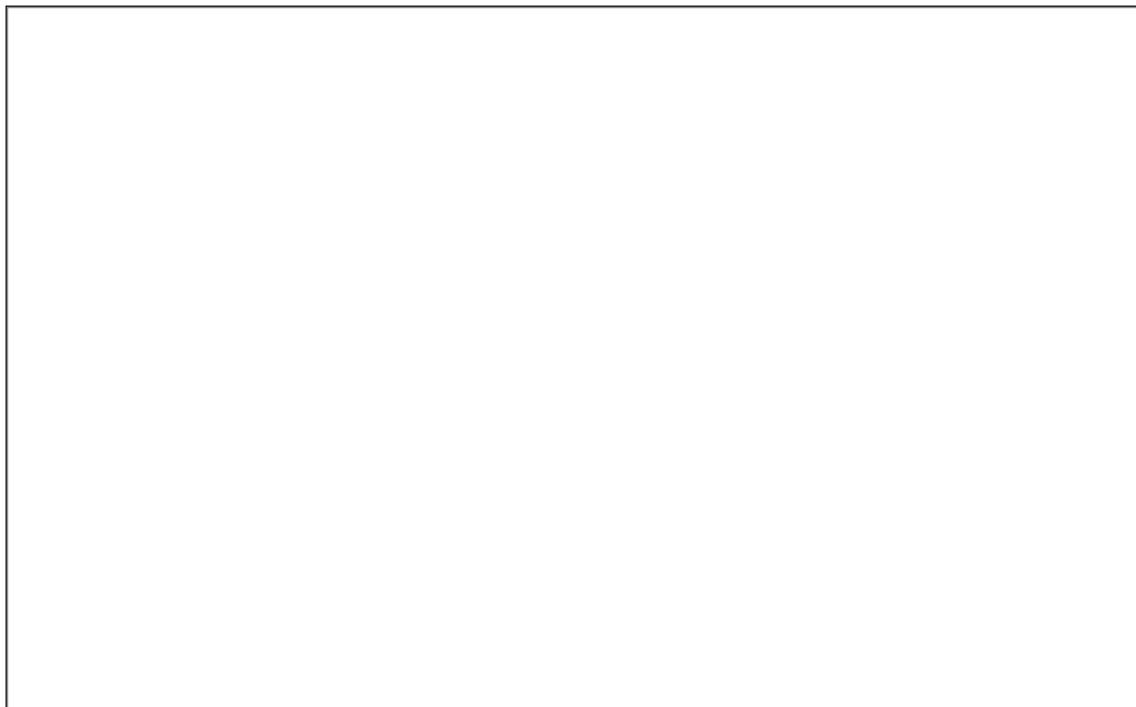
NE: nuclear lysate

S: supernatant after IP

IP: IP with tested antibody

IgG: IP with control IgG

Validation #2  
Analysis



Insert Validation Image (Click here)