

# ENCODE DCC Antibody Validation Document

Date of Submission

Name:

Email:

Lab

Antibody Name:

Target:

Company/  
Source:

Catalog Number, database ID, laboratory

Lot Number

Antibody  
Description:

Target  
Description:

Species Target

Species Host

Validation Method #1

Validation Method #2

Purification  
Method

Polyclonal/  
Monoclonal

Vendor URL:

Reference (PI/  
Publication  
Information)

Please complete the following for antibodies to histone modifications:  
*if your specifications are not listed in the drop-down box,  
please write-in the appropriate information*

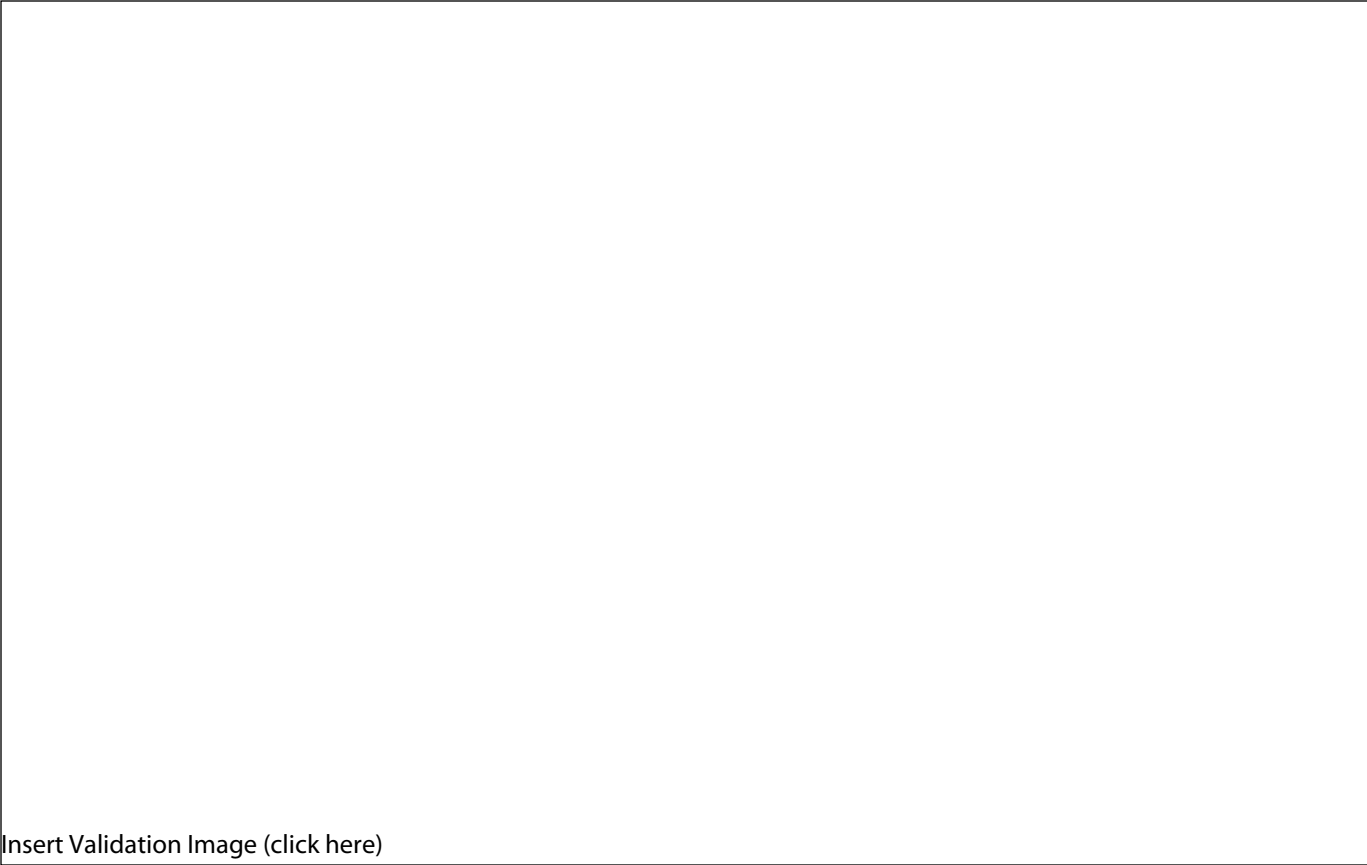
Histone Name

AA modified

AA Position

Modification

Validation #1  
Analysis

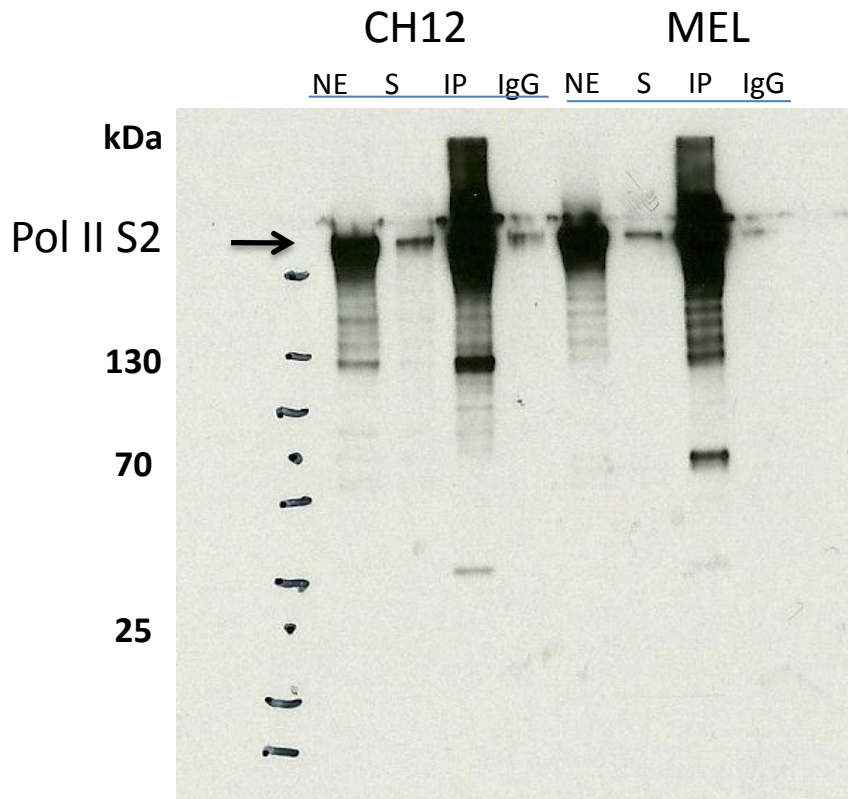


Insert Validation Image (click here)

**Antibody: Pol2-s2 Source:** Abcam ab5095

**Epitope:** Pol2-S2 Antibody is rabbit polyclonal IgG, epitope corresponding to Synthetic peptide conjugated to KLH derived from within residues 1600 - 1700 of *Saccharomyces cerevisiae* RNA polymerase II CTD repeat YSPTSPS, phosphorylated at S2

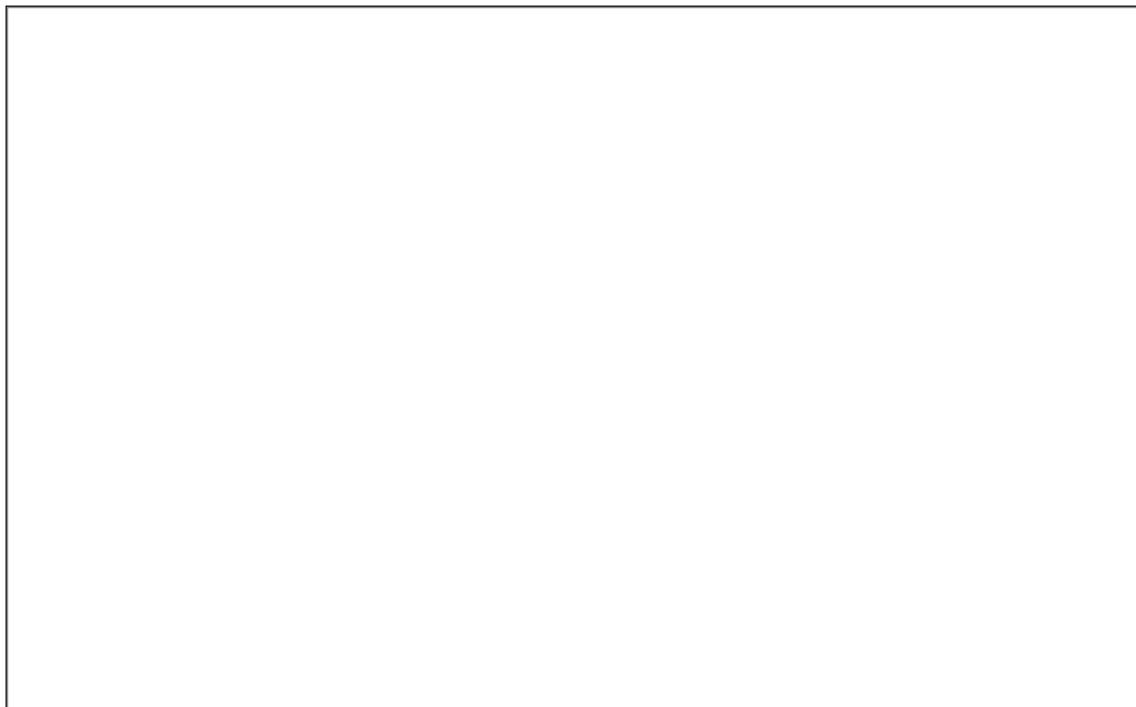
**Validation 1: Immunoprecipitation (IP) in both CH12 and MEL cell lines**



Arrow indicates immunoprecipitated band of expected size of Pol2-S2 in both CH12 and MEL cell lines (~220 kDa).

NE: nuclear extract  
S: supernatant after IP  
IP: IP with tested antibody  
IgG: IP with control IgG

Validation #2  
Analysis



Insert Validation Image (Click here)